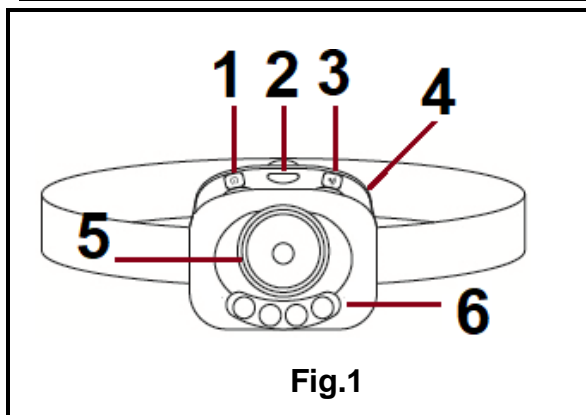


PLEASE READ THE MANUAL BEFORE YOUR FIRST USE. KEEP THIS MANUAL SAFE FOR FUTURE REFERENCE!

PRODUCT DESCRIPTION



1. ON/ OFF button (Red LED/ SOS/ Flashlight)
2. Button to open battery compartment
3. Button to activate motion sensor
4. Battery compartment
5. LED flashlight
6. Red LED/ SOS

TECHNICAL CHARACTERISTICS

Battery type: 3XAAA/LR03 (not supplied) 4.5V \approx

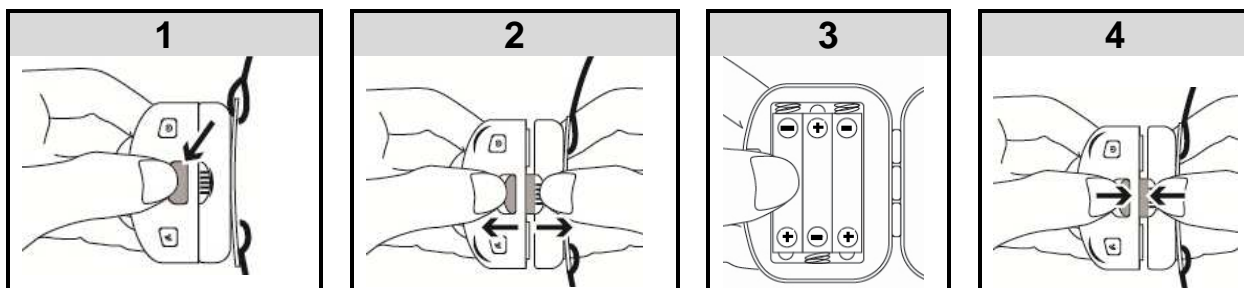
3 LEDs: 1x white LED (strong intensity), 3W, 150 lumens

2 x red LEDs (flashing SOS signal), 0.1W and 1 lumen for each LED

LEDs' Classification (red and white): risk group 0 (no risk)

Ingress protection rating: IPX4 (resists against splashing water)

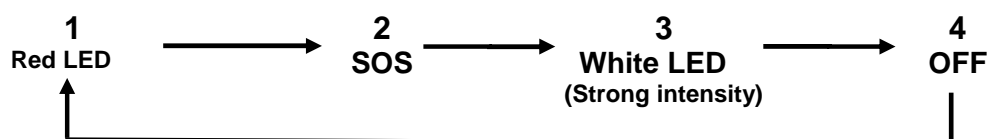
BATTERY INSTALLATION



FUNCTION DESCRIPTION

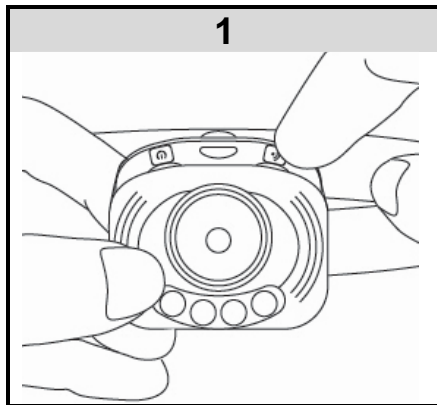
1. LED LAMP ET SOS SIGNAL

The flashlight has 3 lighting modes: red LED, white LED (strong intensity) and flashing SOS signal. Press the ON/ OFF button to switch between the 3 modes.:

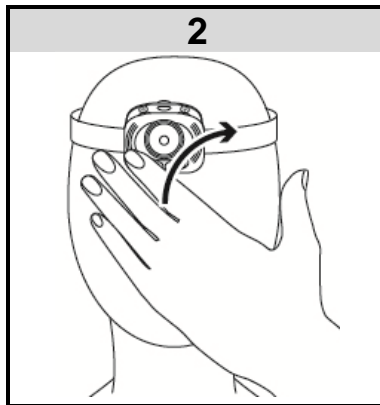


Light distance: up to 100 meters

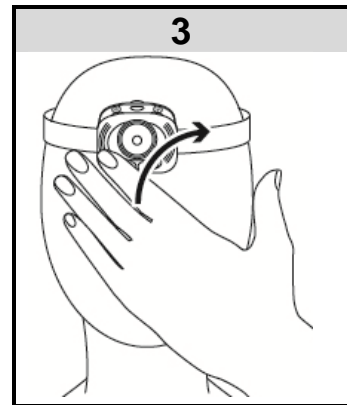
2. LIGHTING TRIGGERED BY MOTION SENSOR



Press white transparent button.



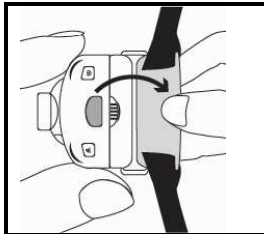
To turn on, move your hand in front of flashlight, from top to bottom or vice versa.



To turn off, move your hand again.

Motion sensor range : about 25 cm

3. ADJUSTABLE LIGHTING ANGLE



Lower the stand located at the back of the headlamp according to the desired lighting angle.

WARNINGS

- Do not shine light directly into eyes.
- Do not stare directly at the light beam.
- Keep away from sources of heat, direct sunlight, humidity, water or other liquids.
- Do not immerse in water.
- Do not drop, short-circuit, modify, disassemble or puncture it.
- It is not a toy. Keep out of reach of children.
- Remove the batteries if you plan not to use the device during a long period.
- Do not try to repair your device. All the repairs must be made by a qualified technician.

WARNINGS ON BATTERIES

- Never mix alkaline, standard (carbon-zinc) and rechargeable (nickel hydride).
- Don't mix new and used batteries.
- Don't attempt to recharge non-rechargeable batteries.
- Remove rechargeable batteries from the device (if possible) before charging them.
- Rechargeable batteries must always be recharged under adult supervision.
- Remove used batteries.
- Never short the power supply terminals.
- Always use the recommended or equivalent battery types.
- Always pay attention to battery polarity.

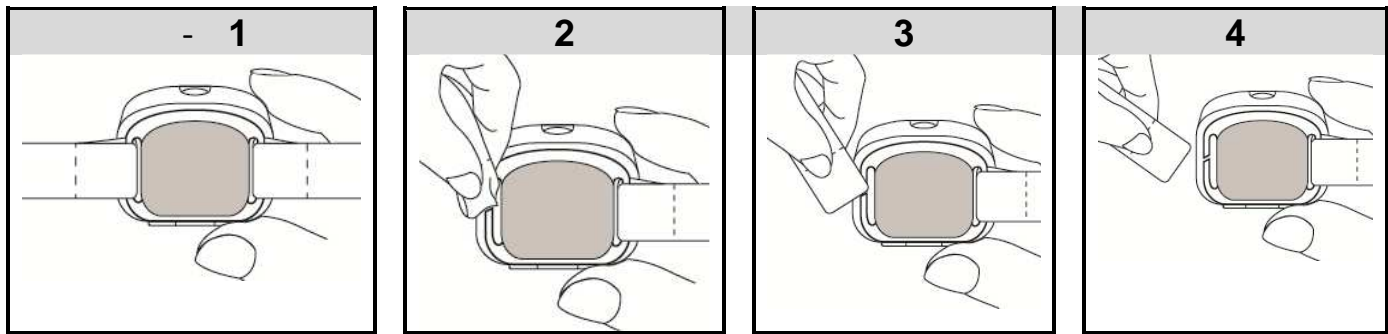
CLEANING AND MAINTENANCE

- If the headlamp gets dirty, clean it with a lightly wet cloth. Wipe it with a dry cloth.
- Washing the headband: Do not use bleach. Do not put into a clothes dryer.

100% Polyester/ polyester



REMOVAL OF HEADBAND FOR CLEANING



- Clean the lens with clean cloth.
- Avoid any prolonged contact of grease with the lens. In case of contact with grease, wipe with a dry cloth.
- **STORAGE:** Store the flashlight in low temperature, dry and ventilated place.



WARNING: You should not dispose of this device with your household waste. A selective collection system for this type of product is implemented by your local authorities. Please contact your local authorities to find out how and where collection takes place. These restrictions apply because electrical and electronic devices contain dangerous substances that have harmful effects on the environment or on human health and must be recycled.

This symbol indicates that electrical and electronic devices are collected selectively. The symbol shows a waste container crossed out with an X symbol.



Imported by PRODIS SAS, 1 rue de Rome, 93110 Rosny-sous-Bois, France
Marketed by EUROTOPS VERSAND GMBH D-40764 LANGENFELD, Germany
Made in PRC